



GAT MONTHLY MEMBERSHIP PROGRESS REPORT

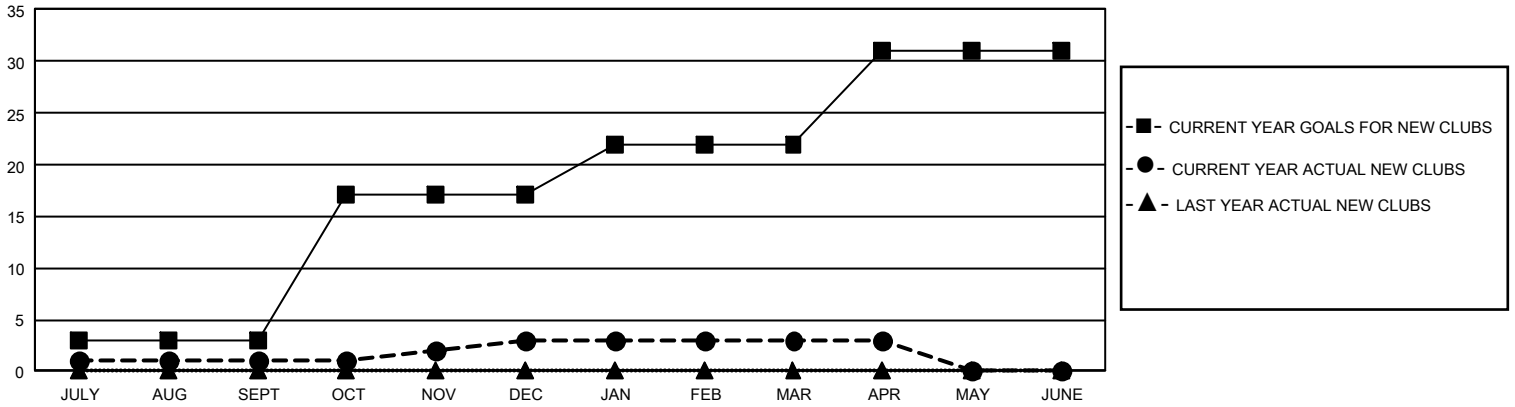
Results as of: 4/30/2024

GMT Constitutional Area 1, Group E

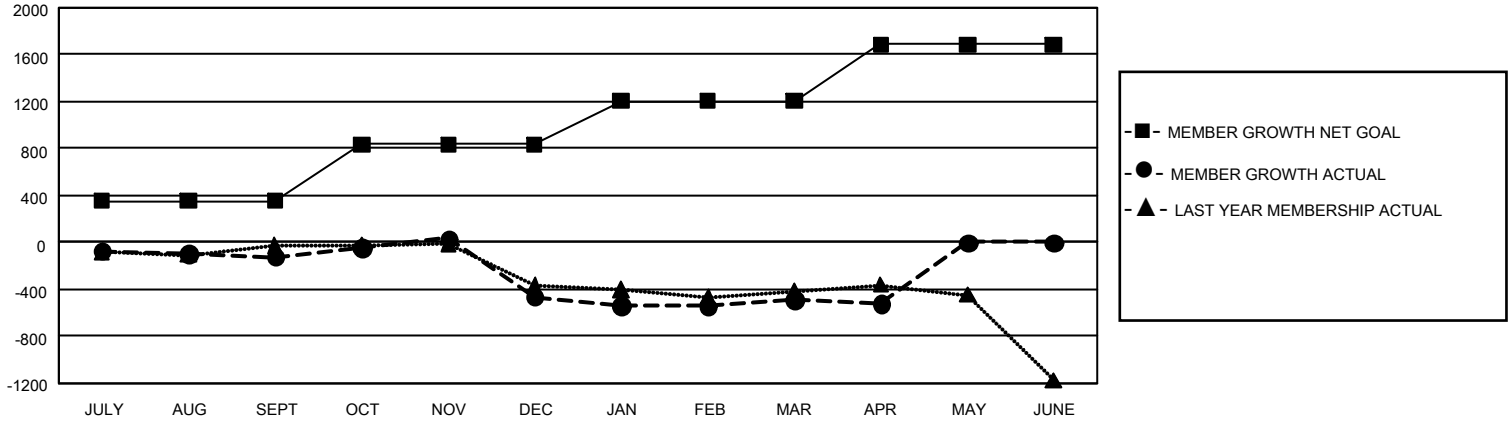
REPORT DOES NOT INCLUDE CLUBS IN UNDISTRICTED AREAS.

Clubs				Members			
RESULTS FOR 2023-2024				RESULTS FOR 2023-2024			
QUARTER	NEW CLUB GOAL	NEW CLUBS	DROPPED CLUBS	QUARTER	MEMBER GROWTH NET GOAL	MEMBER GROWTH ACTUAL	DROPPED MEMBERS ACTUAL (including transfers)
JULY/AUG/SEPT	9	1	8	JULY/AUG/SEPT	354	977	1,023
OCT/NOV/DEC	42	2	22	OCT/NOV/DEC	481	862	1,139
JAN/FEB/MAR	15	0	5	JAN/FEB/MAR	372	818	747
APR/MAY/JUNE	27	0	2	APR/MAY/JUNE	479	224	241

GOALS AND ACTUAL NEW CLUBS CUMULATIVE



GOALS AND ACTUAL MEMBERS CUMULATIVE



DROPPED CLUBS: 37	718 CLUBS OF 1,319 ADDED 1 OR MORE NEW MEMBERS	<u>GENDER DISTRIBUTION</u>	
		MALE 23,037 (67.26%)	FEMALE 11,188 (32.67%)
<u>DROPPED MEMBERS</u>		NON BINARY 1 (0.00%)	PREFER NOT TO ANSWER 24 (0.07%)
DECEASED 502	CLICK HERE FOR CUMULATIVE MEMBERSHIP DATA	TOTAL FAMILY UNIT MEMBERS 6,501	
CLUB CANCELLED 253		FAMILY MEMBERS PAYING HALF DUES 3,346	
OTHER 2,394			
TOTAL 3,149			